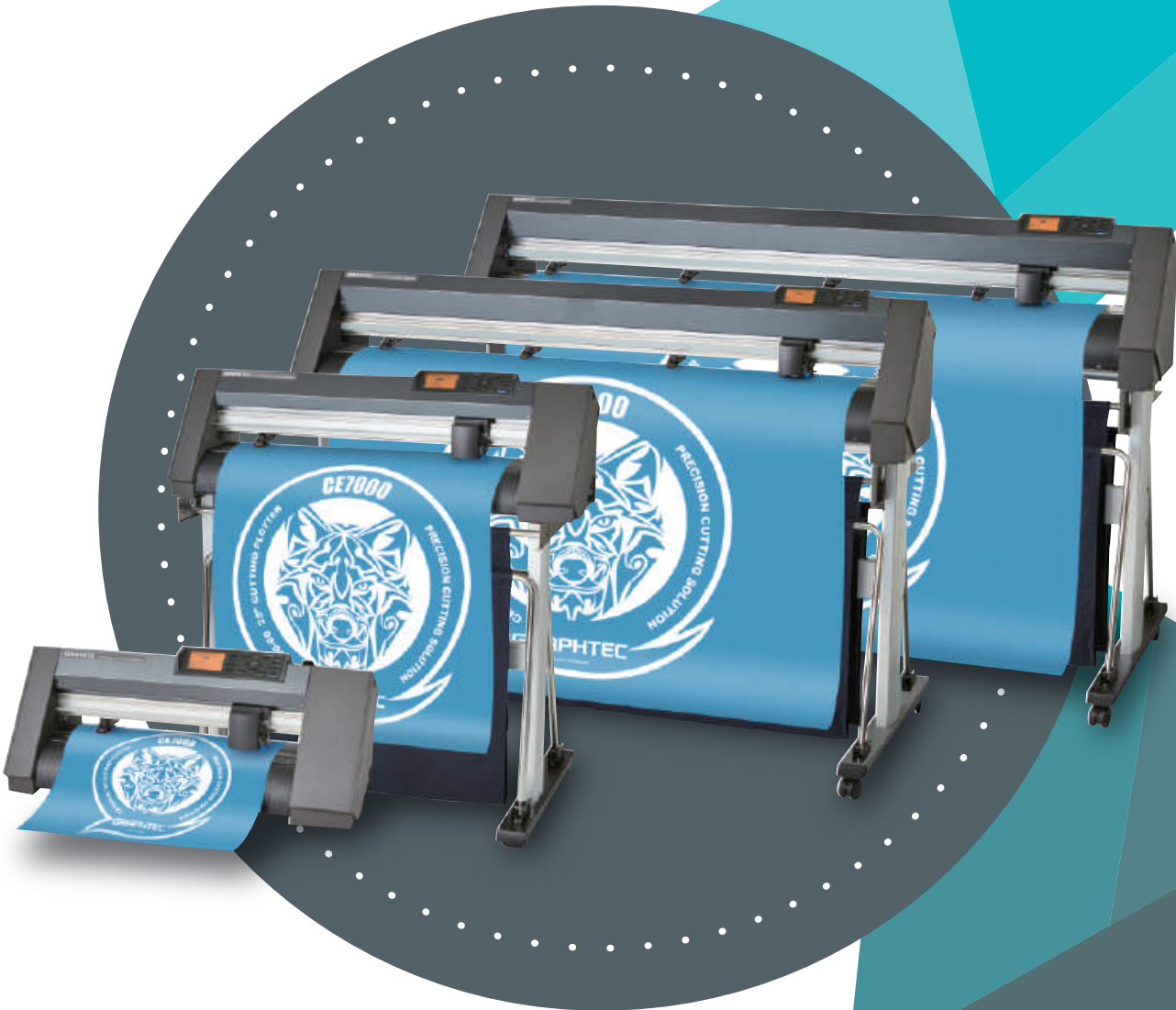


NEW

GRAPHTEC

Cutting Plotter  
CE7000 series

CE7000-40 / CE7000-60 / CE7000-130 / CE7000-160



Specifications					
Item	CE7000-40		CE7000-60	CE7000-130	CE7000-160 (Not available in US & Korea)
Configuration	Grit rolling type				
Drive method	Digital servo drive				
Max. cutting area (W x L) (*1)	375mm x 50m		603mm x 50m	1270mm x 50m	1524mm x 50m
Cutting area of guaranteed accuracy (*1) (When using optional basket)	355mm x 2m		583mm x 2m (583mm x 5m)	1250mm x 2m (1250mm x 5m)	1504mm x 2m (1504mm x 5m)
Mountable media width	Min.	50mm			
	Max.	484mm (19inch)	712mm (28inch)	1372mm (54inch)	1626mm (64inch)
Mountable roll media mass		5kg	9kg	17kg	20kg
Number of push rollers	2 rollers		4 rollers (Max. 5 (option))		
Max. cutting speed	600mm/s at all direction		900mm/s at 45° direction	1000mm/s at 45° direction	
Acceleration	Max. 21.2m/s <sup>2</sup> at 45° direction		Max. 13.9m/s <sup>2</sup> at 45° direction		
Cutting force	Max. 4.41N (450gf)				
Minimum character size	Approx. 5 mm alphanumeric (varies depending on character font and media)				
Mechanical resolution	0.005mm				
Programmable resolution	GP-GL : 0.1/0.05/0.025/0.01mm    HP-GL™ (*2) : 0.025mm				
Repeatability (*1)	Max. 0.1 mm in plot up to 2 m (Excluding media expansion and contraction)				
Mountable number of tools	1 tool				
Blade types	Supersteel				
Pen types	Oil-based ballpoint pen, Water-based fiber-tip pen				
Media types	Up to 0.25mm thickness Marking film (PVC / fluorescence / reflection), polyester film (With specified conditions)				
Interface	USB 2.0(Full Speed), Ethernet 10BASE-T/100BASE-TX				
Buffer memory	2MB				
Command sets	GP-GL / HP-GL™ (Set by command or auto-detect) (*2)				
Display	Graphic type LCD with back-light (240dots x 128dots), supports 10 languages				
Power source	100V to 120V AC, 200V to 240V AC, 50 / 60 Hz				
Power consumption	Up to 100W				
Operating environment	10 to 35 °C, 35 to 75 % R.H. (non-condensing)				
Guaranteed accuracy environment	16 to 32 °C, 35 to 70 % R.H. (non-condensing)				
External dimensions (W x D x H) (with basket)	Approx. 772 x 292 x 313 mm	Approx. 1005 x 582 x 1092 mm (1005 x 936 x 1092 mm)(*3)		Approx. 1704 x 811 x 1215 mm (1704 x 1148 x 1215 mm)(*3)	Approx. 1916 x 811 x 1215 mm (1916 x 1148 x 1215 mm)(*3)
Weight (approx.) (with basket)	13 kg	23 kg (25.2 kg)(*3)		51 kg (54.9 kg)(*3)	55 kg (59.5 kg)(*3)
Compatible OS (*4)	Windows 10/8.1/7 Mac OS X 10.6 ~ 10.11 / macOS 10.12 ~ 10.15 (Graphtec Studio: 10.6 - 10.15, Cutting Master 4: 10.7 - 10.15)				
Supported software (*5)	Graphtec Pro Studio(Windows)(*6), Graphtec Studio(Mac), Cutting Master 4(*6), Windows Driver				
Safety	PSE, UL/cUL, CE mark				
EMC	VCCI Class A, FCC Class A, CE mark				

Option		
Item	Part No.	Description
Basket for CE7000 series	PG0103	For CE7000-60
	PG0104	For CE7000-130
	PG0105	For CE7000-160
Carrier sheet table	OPH-A45	For CE7000-40 or CE7000-60
Additional push roller kit	OPH-A49	Only for CE7000-130/CE7000-160
Optional Stand	ST0118	For CE7000-60
Graphtec Pro Studio Plus	OPS682-PLS	Design software including all advanced functions (1 license)
Graphtec Pro Studio Plus for Rhinestone	OPS682-RSF	Limited edition of rhinestone function only (1 license)
Graphtec Pro Studio Plus for Auto Nesting	OPS682-ANF	Limited edition of auto nesting function only (1 license)

Standard accessories		
Item	Qty	Description
Power cord	1	The type of cord is different by destination.
USB Cable	1	2.9m long
Cutting blade holder	1	PHP33-CB09N-HS
Cutting Blade	1	CB09UB-1P
Loupe	1	PM-CT-001
Fiber-tip pen holder	1	PHP31-FIBER
Water-based Fiber-tip pen	1	KF700-BK (black)
Roll Media Tray	1	Only for CE7000-40
Stand for CE7000	1	Standard accessory for 130 / 160
DVD-ROM	1	User manual, Windows driver, Graphtec Pro Studio (Windows, 1 license), Graphtec Studio (Mac), Cutting Master4
Printed document	1	Setup Manual, Cutter Blade Manual and Safety Manual

- \* CE7000-160 is not available in US & Korea.
- \*1 Operated with Graphtec specified cutting condition and media. For long-length cutting, the basket is used.
- \*2 HP-GL™ is a registered trademark of Hewlett-Packard Company.
- \*3 When equipped with the stand.
- \*4 Graphtec does not support software/driver used with operating systems that have become obsolete and are no longer supported by the OS developer.
- \*5 The software can be used by downloading from Graphtec website.
- \*6 It requires an Internet connection in order for activation or registration when starting the software for the first time.

Supplies			
Item	Part No.	Description	Package
Cutting blade holder	PHP33-CB09N-HS	For CB09U series blade	1 set/pack
	PHP33-CB15N-HS	For CB15U series blade	1 set/pack
Cutting blade	CB09-P	0.9mm dia. 45° angle, Supersteel	5 blades/pack
	CB09UB-5	0.9mm dia. 45° angle, Supersteel	5 blades/pack
	CB09UB-K60-5	0.9mm dia. 60° angle, for Car-film	5 blades/pack
	CB15U-5	1.5mm dia. 45° angle, for paper/cardboard	5 blades/pack
	CB15U-K30-5	1.5mm dia. 30° angle, for paper/cardboard	5 blades/pack
Loupe	PM-CT-001	Checking blade length, for PHP33 and PHP35 series	1 set/pack
Fiber-tip pen holder	PHP31-FIBER	Pen holder for KF700 series pen	1 set/pack
Water-based fiber-tip pen	KF700-BK	Pen (black)	10 pens/pack
Ballpoint pen holder	KF700-RD	Pen (red)	10 pens/pack
Oil-based ballpoint pen	PHP34-BALL	Pen holder for KB700 pen	1 set/pack
Carrier Sheet	KB700-BK	Pen (black)	10 pens/pack
Cutting mat	CR09300-A3	A3 size	2 sheets/pack
	PM-CR-009	For CE7000-40 replacement cutting mat	2 sets/pack
	PM-CR-010	For CE7000-60 replacement cutting mat	2 sets/pack
	PM-CR-011	For CE7000-130 replacement cutting mat	2 sets/pack
	PM-CR-012	For CE7000-160 replacement cutting mat	2 sets/pack

- Brand names and product names listed in this brochure are the trademarks or registered trademarks of their respective owners.
- Items mentioned are subject to change without notice. For more information about product, please check the web site or contact your local representative.

⚠ Important safety instructions	• Before using it, please read the user manual and then please use it properly in accordance with the description. • To avoid malfunction or electric shock, please ensure ground connection and use it in specified power source.
---------------------------------	---



Shop No. 2, Al Jamal Tower, Al Qusais Industrial 5th, Beirut Street, Al Qusais, Dubai, U.A.E.  
P.O.Box. 55469, Tel: +971 4 280 64 10, Fax: +971 4 280 64 70

Website <https://ads-adv.com>



CE7000\_JE10551\_1P

Enhanced basic specification and excellent cost-effectiveness

- Supporting a cutting force of 4.41N (450gf) expands application possibilities.
- Ease of use with great media tracking on long runs.
- ARMS8.0 helps improve the productivity of print and cut.
- Improved workflow with offline output using USB memory and data management function using Barcode.
- Useful standard or optional software helps improve the efficiency of cutting operation.

\* The basket in photo above is optional item

[www.ads-adv.com](https://www.ads-adv.com)



# Graphtec cutting plotters never stop evolving.

The cutting plotter CE7000 series has great efficiency as high as high-end model with high cost-effectiveness. Support improve work efficiency and productivity with enhanced specifications and standard software specialized for cutting operation.

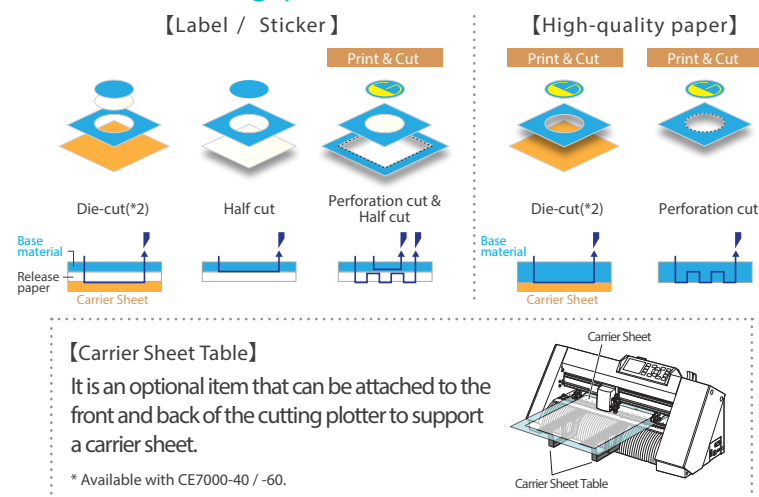


## 4 sizes are available depending on the application.

Minimum mountable media width is 50mm (1.96 inch). Maximum mountable media width depends on each machine; 484mm (19 inch), 712mm (28 inch), 1372mm (54 inch) and 1626mm (64 inch).

	Media
CE7000-160	← 1626mm →
CE7000-130	← 1372mm →
CE7000-60	← 712mm →
CE7000-40	← 484mm →

Supports various cutting patterns such as perforation cut with maximum cutting force 4.41N (450gf) and maximum cutting speed 1000mm / s (\*1).



## Cutting performance that guaranties accurate 5m length cutting. (\*3)

The media stoker helps stabilize the feeding of media. By adjusting the pressure of the middle push roller to the media (\*1) in three levels, it prevent media floating. In addition, by using an optional special basket, stability in long cuts can be achieved.



Push roller pressure switching (CE7000-130/160)

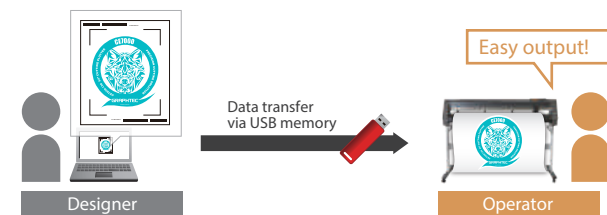
Media stoker (CE7000-60/130/160)

Optional basket (CE7000-60/130/160)

## Data output via USB flash memory without PC

The cutting data designed with Cutting Master 4 or Graphtec Pro Studio / Plus can be output directly to the cutting plotter by saving to USB flash memory and plugging in. This simplified work-flow enables users to operate without a computer.

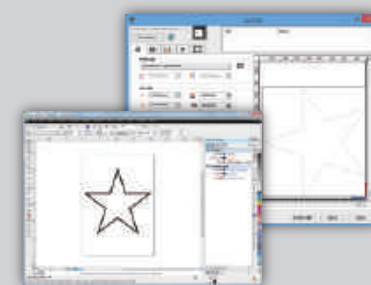
\* The USB memory format only supports FAT32. Please note that NTFS and exFAT are not supported.



Adobe Illustrator / CorelDRAW plug-in software

## Cutting Master 4

Standard Accessory



Cutting Master 4 is Graphtec plug-in software for Adobe Illustrator and CorelDRAW Graphic Suite. It sends cutting data to the plotter and includes a variety of functions such as: preview, registration mark creation, tool conditions, cut job settings and more. Cutting Master 4 is easy to use and enables you to get the best performance from your plotter. Trim marks for Adobe Illustrator is finally available.

Supported OS (*4)	Windows 10/8.1/7, Mac OS X 10.7~macOS 10.15
Supported software (*4)	Adobe Illustrator : CC2019/CC2018/CC2017/CC2015.3/CC2014/CC/CS6/CS5/CS4 (*5) CorelDRAW : Graphics Suite 2019/2018/2017/X8/X7/X6/X5/X4

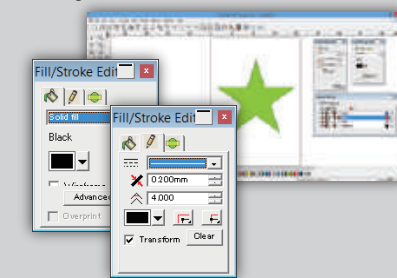
### <Main Features>

- Move, expand, shrink the object directly from the preview window
- Create object outline, recognize the line width and overlap
- Output by layer or color
- Insert weeding line
- Split an object into small pieces with tiling function
- Connectable and switchable to multiple plotters

Graphic design software

## Graphtec Pro Studio

Standard Accessory



Easy-to-use application software for creating original designs. It has many enhanced functions such as auto-shapes, shading, and editing functions. It can also configure the cutting conditions and other setting on plotter. EPS, Ai(\*6), CMX(\*6), and PDF(\*6) file formats are supported. Graphics created with other popular design software can be imported into the software.

Supported software (*4)	Graphtec Pro Studio	Windows 10/8.1/7
	Graphtec Studio	Mac OS X 10.6~macOS 10.15

### <Main Features>

- Create designs using auto-shape, various line types, etc.
- Texts edit (rotate, mirror, fit-to-shape, etc.)
- Auto-trace (supporting bmp, tiff, jpeg, gif, etc. image format)
- Connectable and switchable to multiple plotters
- EPS, DXF format files and other raster format files are supported
- Layer (\*6)
- Output by color
- Insert weeding line (\*6)

Advanced Graphic Design Software

## Graphtec Pro Studio Plus

Option

Optional Software

Graphtec Pro Studio Plus for Rhinestone

Graphtec Pro Studio Plus for Auto Nesting